



JL COMPOSITES

KNOW-HOW AT THE SERVICE
OF WATER SPORTS



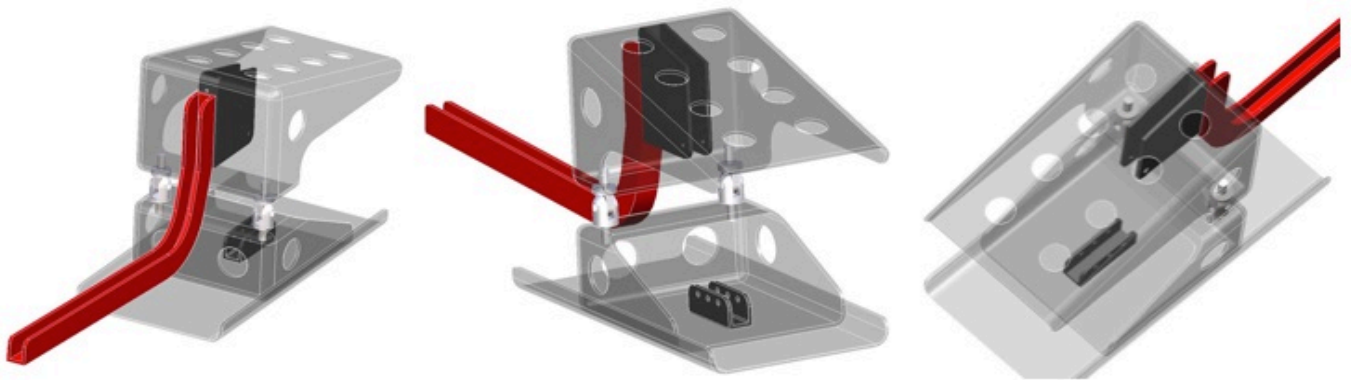
JL COMPOSITES

MC1 PROTOTYPE FRAME BUILDER FOR SEATED WATER SPORTS

MC1 FRAME

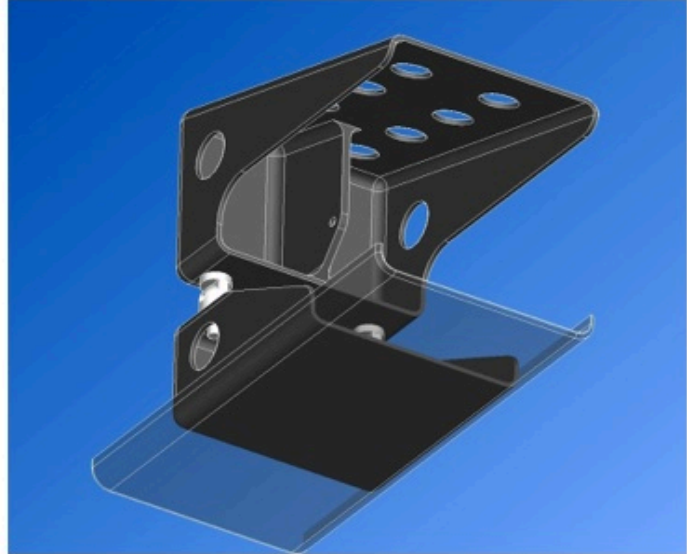
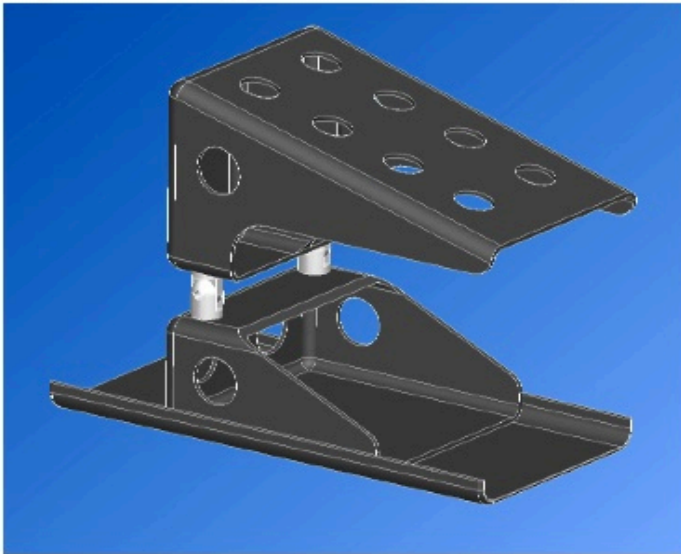
This leisure equipment has been developed in order to practice water activities in seated position for valid and disabled persons. Built in composite materials light and resistant, it is the best weight to strength ratio.

It is meant for a leisure and initiation use in recreative structures with managerial staff such as recreative centers equipped with glide simulator with water projection and monitors presence. This modulare frame is also used by some riders for wakeboard, kitesurf... above their own responsibility.



History :

10 years of work and tests have been necessary, first prototypes in aluminium and then in composite materials, to develop the only high quality composite's frame. It is a team's work with disabled riders, kitesurf monitors, pro riders, medical centers and ingeneers, which has allowed to develop the ideal frame.



Building :

Ultra strong prototype frame, solid and light because built with 100% composite materials, custom made with choice of materials (glass fiber or carbon fiber) depending on your requirements.

- . Frame, rail, support of foot and shell 100% in composite materials : epoxy resin/carbon fiber/kevlar fiber/glass fiber.
- . under vacuum building and stoving of all parts.
- . Anodized aluminium articulations in order to insure longevity in salt water.
- . Weight of frame without shell and support of foot : 3,350 kg



. Goals :

Frame for demanding riders with high building quality and unequalled performances.

Accessible, high-performance, multipurpose, ...

. Fiability :

Research and developement on strength and breaking points with tests in real conditions, high quality carbon and glass fiber, kevlar reinforcement.

. Performance :

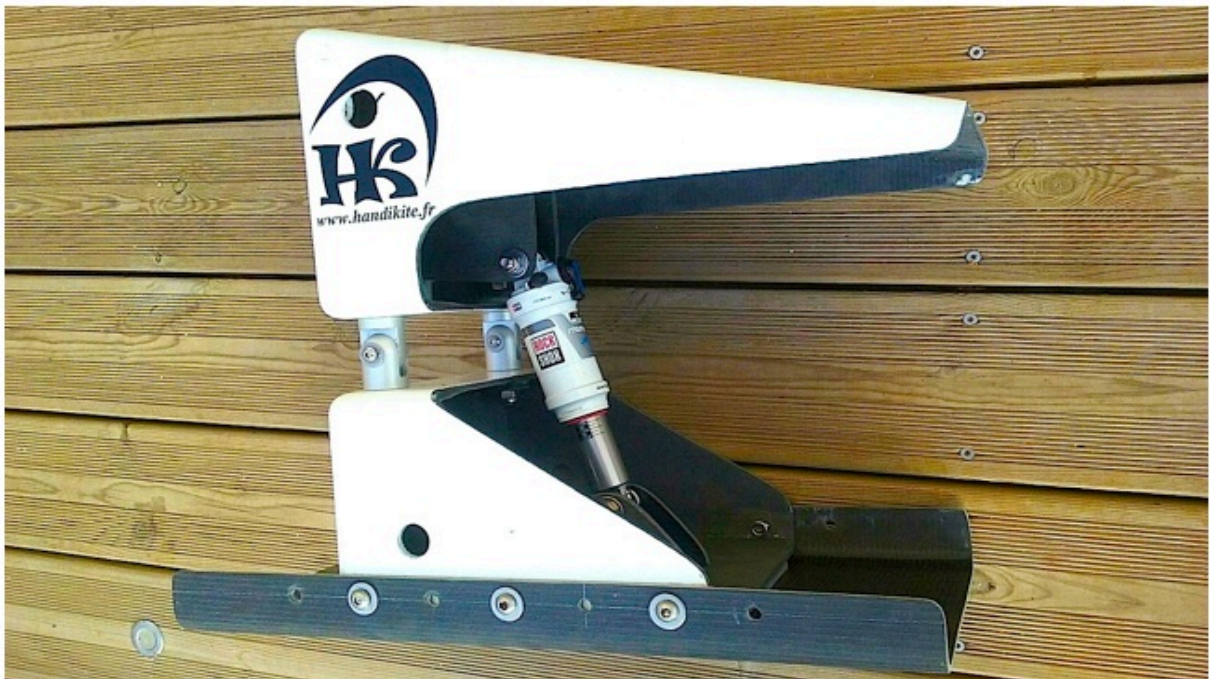
Same performances as valid riders in all security and in different fields : wake, crusing, freeride, ...

Frame's stiffness facilitates going up to the wind and tricks realization.

. Lightness :

Custom made building and use of different types of fiber depending on your budget.

- 100% carbon fiber for a highter stiffness, reactivity and lightness
- 100% glass fiber for a recreational or school use



. Removable / Compact :

Easy manutention and compact transport of your frame when traveling in plane. When mains parts are removed, they all can be put into the shell.



. Security / Flexibility :

MC1's frame is equiped with a shock absorber which can be locked and allows a 25 cm shock-absorbing when impacting with water. It protects against shocks on spinal column, pelvis, buttocks and lower limbs.

Support of foot allows frame to have a « all suspension », impacts and shocks when riding are limited because shock absorber, front spatula and board absorb water deformations.



. Multi-purpose :

This frame consists of a base articulated with a shock absorber, a rail, a removable support of foot and a shell with or without articulated back part.

Using a rail between board and frame allows a great flexibility of use. You can change quickly of wake, kite or surf boards of the market using origin inserts and so using the board which suits you the better.



. Adjustable :

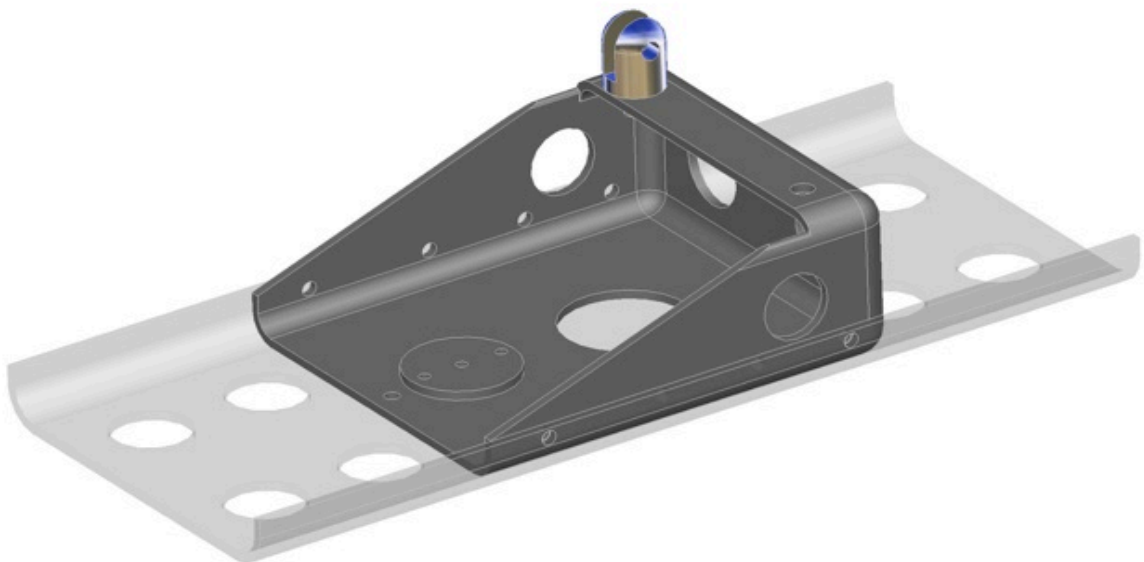
Angulation of seat is from 35° to 75° thanks to the use of shock absorber adjustable in compression and expansion which can also be locked. The frame can be modulated in a few minutes to be adapted to different pathologies and morphologies thanks to the change of angulation and amovable support of foot. Frame can be adjusted depending on water surface and rider's level.



Exemple of frame's angulations depending on pathologies

. Accessible :

Rail offers a great balance to the rider when stopped and when riding. Gravity center can be adjusted moving rail forward or backward. Backward for beginners, then in center for advanced riders. It allows to adapt frame's balance on the board depending on pathologies (with or without abdominals, with or without lower limbs...). Support of foot's plate is sliding and allows to adjust quickly foot's position. This frame is adjusted to legs length and wedging is perfect.





. Shell :

We have worked 8 years to develop a specific shell for water sports practice.

Our ergonomic shells are built with 100% composite materials, custom made with the choice of fiber (carbon or glass fiber) depending on your goals. They are with or without articulated back part depending on the kind of practice (wake, snow skiing, canoe, paddle...).

Our technology allows an immediate reactivity from the body to the board (better endurance, go up to the wind, tricks execution...)

In order to insure confort, shells are covered with high density foam to protect the rider. For the seat part, we use a specific anti bed sore foam of 4 cm thickness.

Choice of size's shell is done with your specific measurements in order to fit perfectly.

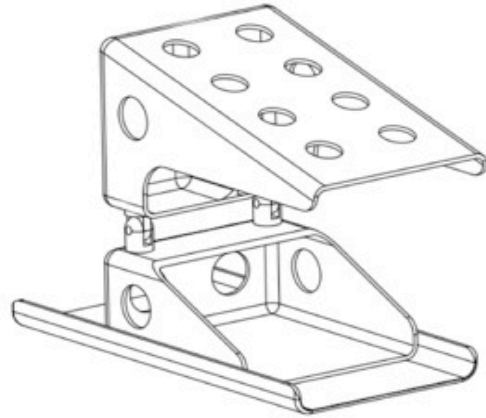
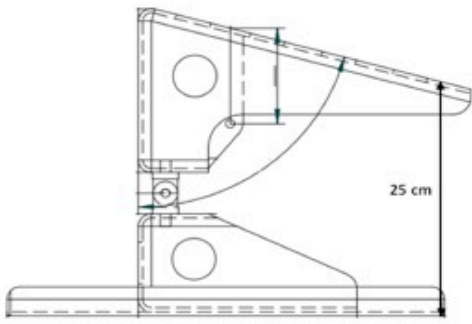
They can be equipped with straps to adjust back part lead angle, with velcro straps or buckles for chest and thighs.

They also can be equipped with handles to be assisted by monitors during firts starts, they can stabilize your frame in the water.



MC1 frames are referenced at Madéa Concept, glide simulator's builder for wake and surf practice.





Frame can be fitted on all market's boards.



JL Composites : All rights reserved

Informations about the use of the frame by some kitesurf riders on their own responsibility.

STABILITY, CANCELLATION EFFECTS OF BOUNCE (DOLPHIN) OF THE SWELL WITH THE SHOCK ABSORBER, POSSIBILITY TO RIDE WITHOUT FORCING WITH A SINGLE HAND

FEET REST ON A PLATINUM WITHOUT CONTACT WITH THE BOARD (TO AVOID THE SHOCKS AND THE EFFECT BOUNCE), THIS PLATINUM IS CONNECTED WITH THE FRAME SUSPENDED AS FOR THE FRAMES OF SNOW SKIING, THE NOSE OF THE BOARD CAN TWIST AND REACT NORMALLY TO THE SWELL

HEIGHT OF THE FRAME DEFINED NOT TO BANG THE SEAT IN THE SWELL





SEAT 100 % CUSTOM-MADE CARBON STUDIED FOR THIS ACTIVITY, ENHANCED, BACK EXTENDED TO WRAP THE BUST WHICH GIVE A MAXIMUM OF COMFORT AND ULTRA STIFF FOR AN IMMEDIATE REACTIVITY OF THE MOVEMENTS OF THE BUST ON THE BOARD, SO EASY TO RIDE GO UP TO THE WIND, JIBES AND THE TRICKS

CENTERED FRAME WHICH ALLOWS TO PRESERVE TWIST OF THE BOARD FORWARD AND BACKWARD, WITH A DISTRIBUTION OF THE EFFORTS TO USE THE POTENTIAL OF THE BOARD AT THE MOST, SO GOING UP TO THE WIND AS THE VALID IS SO EASY. THERE ARE 25 CMS OF AMPLITUDE ABSORPTION OF THE SHOCKS OF THE FRAME DURING BIG SHOCKS (JUMPS). WITH THE SHAPE OF THE FRAME AND THE POSITION OF THE SHOCK ABSORBER YOU PROTECT YOUR SPINAL AND YOUR NECK DURING YOUR RIDE



SUPPORT OF FEET, NO CONTACT WITH THE BOARD, THE NOSE OF THE BOARD CAN TWIST WITHOUT DOLPHIN EFFECT IN YOUR FRAME, PERFECT STABILITY

DISTANCE TO HAVE THE TWIST WHEN THE BOARD CROSSES THE SWELL

Here are some pictures of frames and shells used out of Madéa Concept's glide simulators, modified and especially equipped by some riders on their own responsibility.

We have shells and frames in France, Switzerland, Israel, Australia, Italy,
... .











surf club keros
kitesurfing windsurfing playground

[Location](#) ▾ [Accommodation](#) ▾ [Surf Station](#) ▾ [Services](#) ▾ [Keros For All](#) [Jobs](#)
[Prices](#) ▾ [Contact](#) [Book Now](#)

KEROS FOR ALL

The first European Active Holiday Resort fully accessible and friendly for individuals with physical disabilities.



Keros beach, Limnos, Greece.

Specialized cata kites, kite buggies, sit kite boards, sea kayaks, modified SUPs and tons more toys, paired with a turquaz slice of Greek paradise, top notch beach-side and lodge facilities, along with IKO Certified instructors and an appetite for some serious fun: welcome to Keros For All!

The rail of the MC1 frame allows to settle the position of the rider with a big precision, your stability is perfect during the practice with a hydrofoil.



We work at this day on a prototype to fix or to remove the hydrofoil by handle.



Contact : julien Lecocq

Mail : jlcomposites@gmail.com